

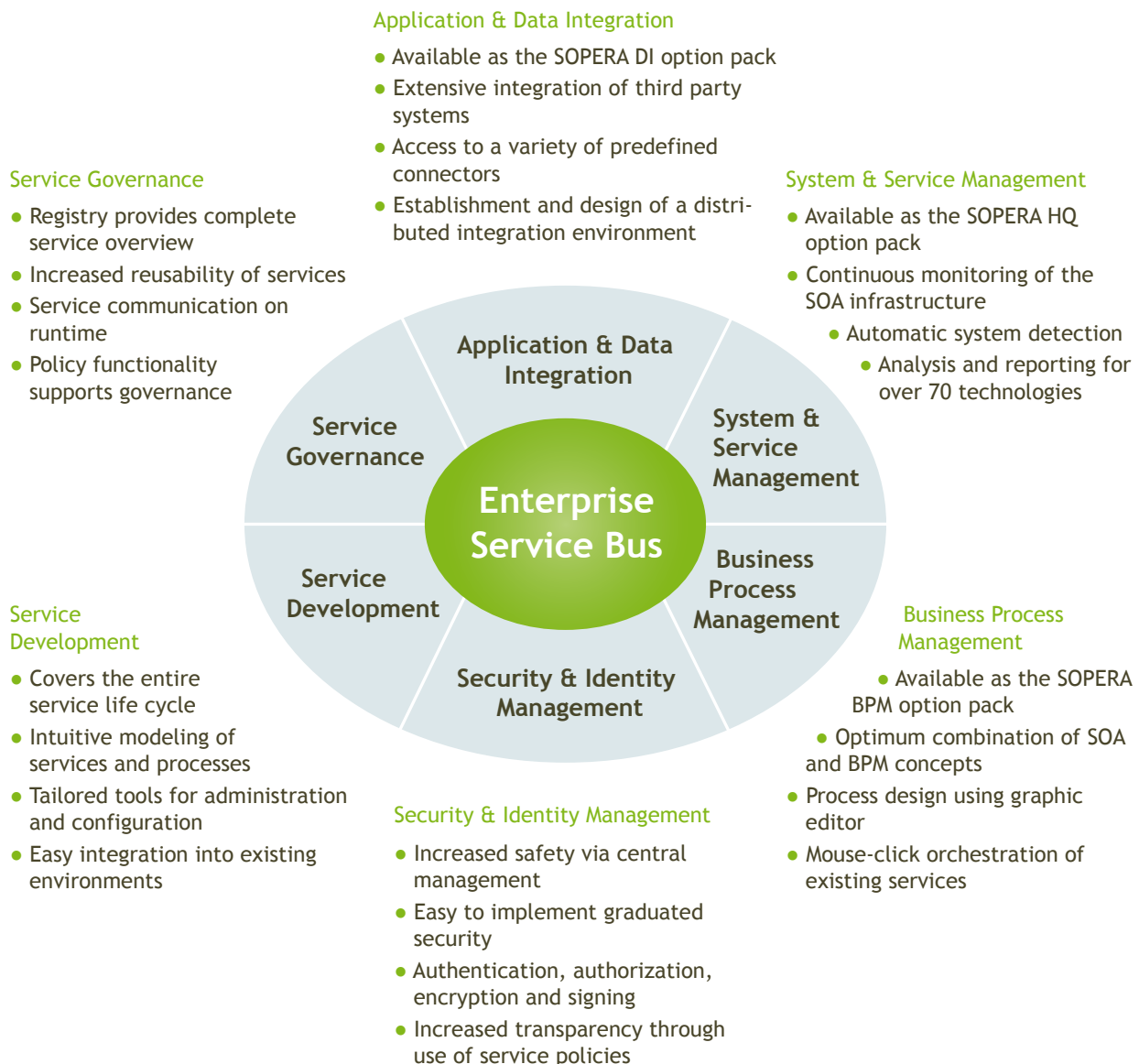
SOPERA ASF 3.3

provides complete SOA functionality

SOPERA ASF version 3.3 is a proven platform for Service Oriented Architecture (SOA) that provides full enterprise functionality at low cost and incorporates all the key areas of integration: from service design to management through to data integration and business process management. SOPERA ASF provides companies a complete free license solution that enables them to create and operate sustainable and agile IT infrastructures.



SOPERA Advanced Service Factory 3.3 - The Complete Integration Package:



Enterprise Service Bus

- Fully equipped and intelligent SOA infrastructure
- Distributed, highly scalable architecture
- Flexible, standards-based expandable plug-ins
- Connects Java and .Net system environments

SOPERA Release 3.3 Highlights

SOPERA ASF's plug-in architecture provides maximum flexibility, combining the best components to create a powerful easy-to-use integration package. SOPERA ASF equips companies and organizations with the precision-tailored functionality required to solve a huge array of differing integration tasks, including business process management, integration of third party systems or the comprehensive management and monitoring of services and infrastructure.

Business Process Management

SOPERA
BPM

The SOPERA BPM option pack enables realization of sophisticated business process management scenarios as well as completely transparent integration into SOPERA's SOA infrastructure. Creating processes using SOPERA's graphic editor is simple and intuitive. Likewise, SOPERA ASF's fully integrated BPM server also enables the orchestration of existing SOPERA services and complex business processes via mouse click.

Application & Data Integration

SOPERA
DI

In order to provide best possible integration functionality, SOPERA also includes the SOPERA DI option pack, the best possible solution for integrating data from various sources and formats and linking in various differing standard applications. As such, SOPERA DI delivers "out-of-the-box" connectivity to business applications, business intelligence systems or databases, while also creating a distributed integration environment which, for example, allows service operators to launch and manage integration processes.

System & Service Management and Monitoring

SOPERA
HQ

SOPERA ASF is frequently deployed in mission critical environments. The SOPERA HQ option pack enables easy service management and system monitoring, with SOPERA ASF operating parameters being conveniently managed via dashboards. In addition, SOPERA HQ also provides the basis for the realization of comprehensive service activity monitoring (SAM) and thus provides a useful tool for enterprise monitoring and the control of SOA components.

Combing .Net and Java Systems

SOPERA
.Net

The SOPERA .Net option pack enables users to integrate .Net-based services into the service bus and thus seamlessly integrate system environments. Likewise, users benefit from a uniform solution that allows data and functions from Java and .Net applications to be utilized transparently as fully fledged services independently of the underlying technology. .Net systems use SOPERA ESB's central infrastructure services, enabling uniform SOA governance across the platforms.

SOPERA GmbH
Sträßchensweg 10
53113 Bonn
Germany

Tel.: +49 (0)228-182 190 19
Fax: +49 (0)228-182 191 93
info@sopera.de
www.sopera.com

